

AASHTOWare Bridge Rating and Design Training

IE1 – Import/Export BrR/BrD Data (BrR/BrD 6.4)

This example describes BrR/BrD system data exchange. User will need to have two databases to do data exchange.

BrR/BrD 6.4 is capable to do the following system data exchange,

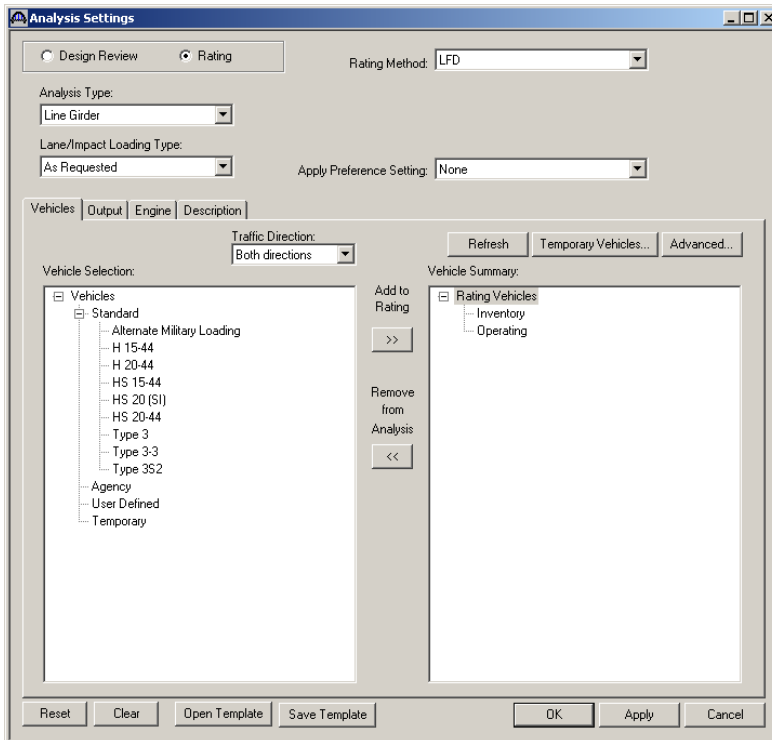
- Analysis Event Template
- Load Combination Settings Template
- System Defaults
- Unit Tolerances
- General Preference Template
- Pontis Configuration Options
- Pontis Parameters

Topics Covered

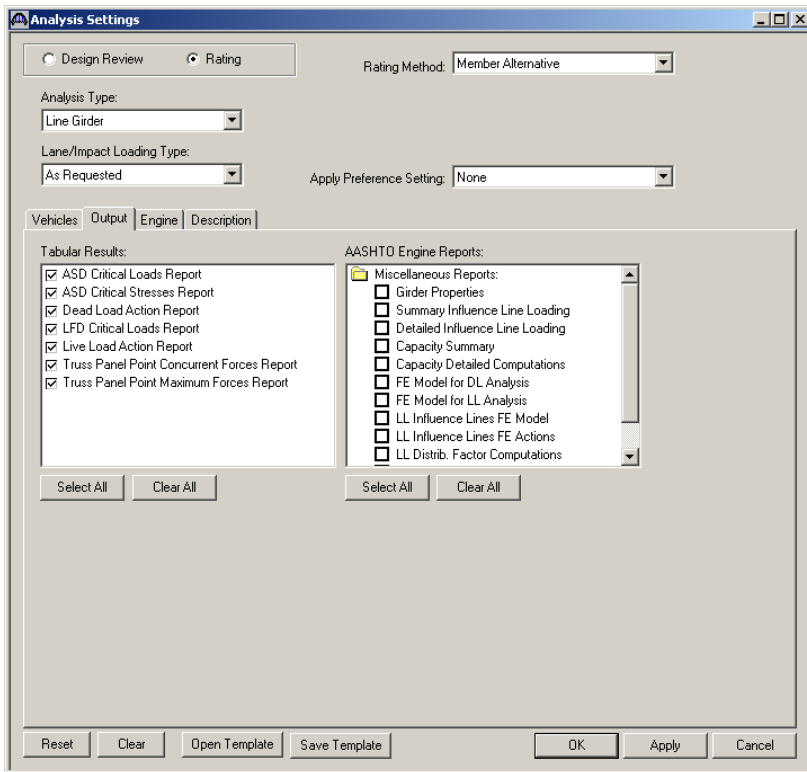
- How to import and export Analysis event template
- How to import and export System defaults

Import and export Analysis Event Template

Open a bridge in sample database (Virtis64s), click View Analysis Settings button  on the tool bar.

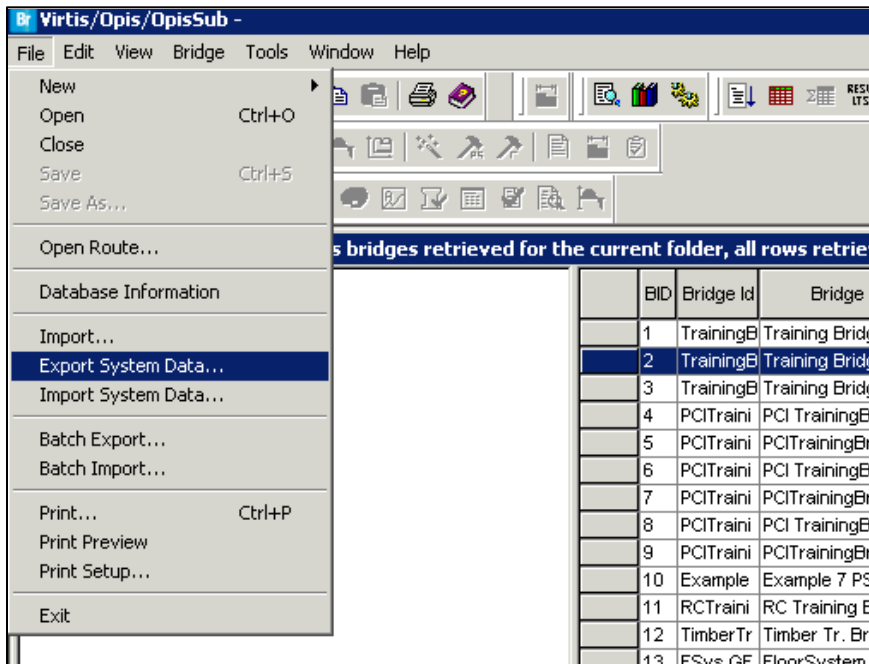


Open HS20 template. On Output tab, click Select All button for Tabular Results.

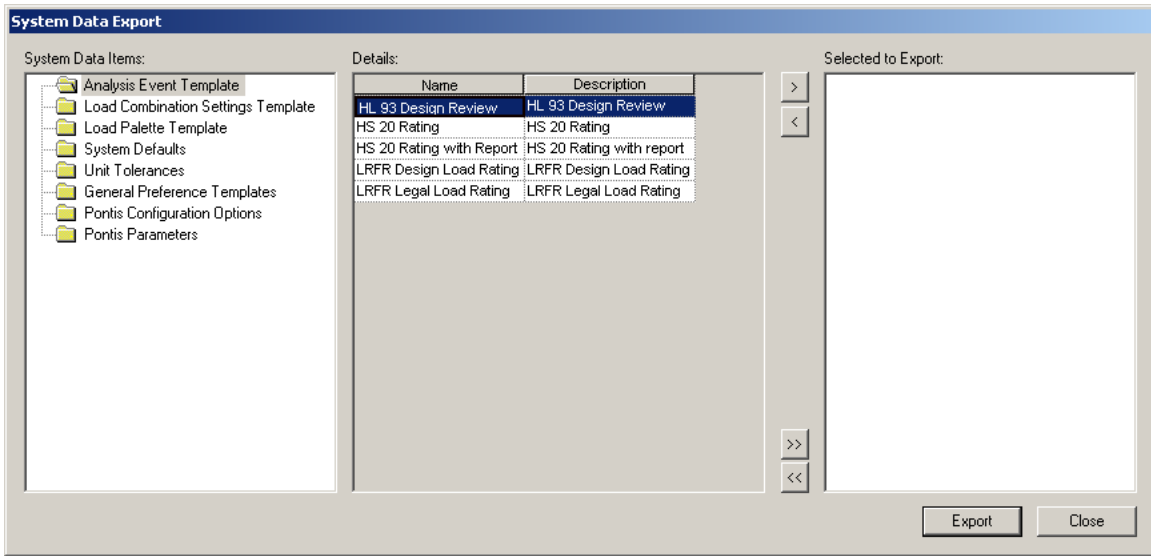



Click Save Template button to save the change as a new Template “HS 20 Rating with Report”. Close the Analysis Settings window. Close the bridge.

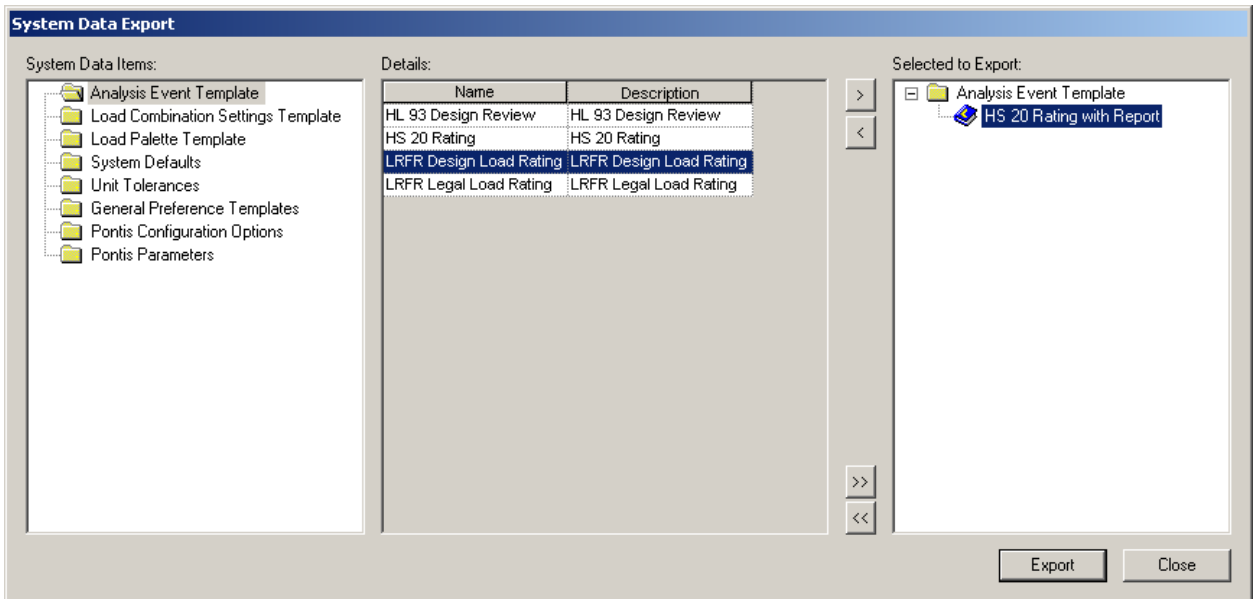
Click File/Export System Data... on tool bar as shown below.



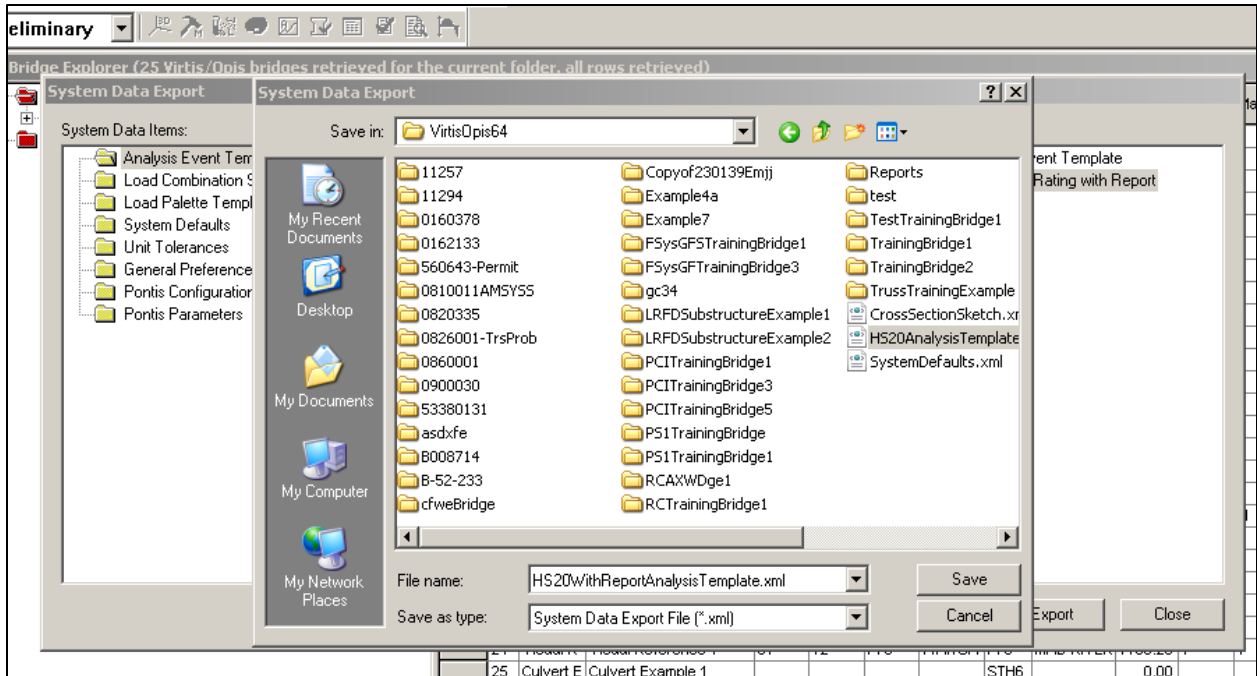
System data export dialog will open as shown below.



Select HS 20 rating with Report and click  button to add this analysis event template to export.

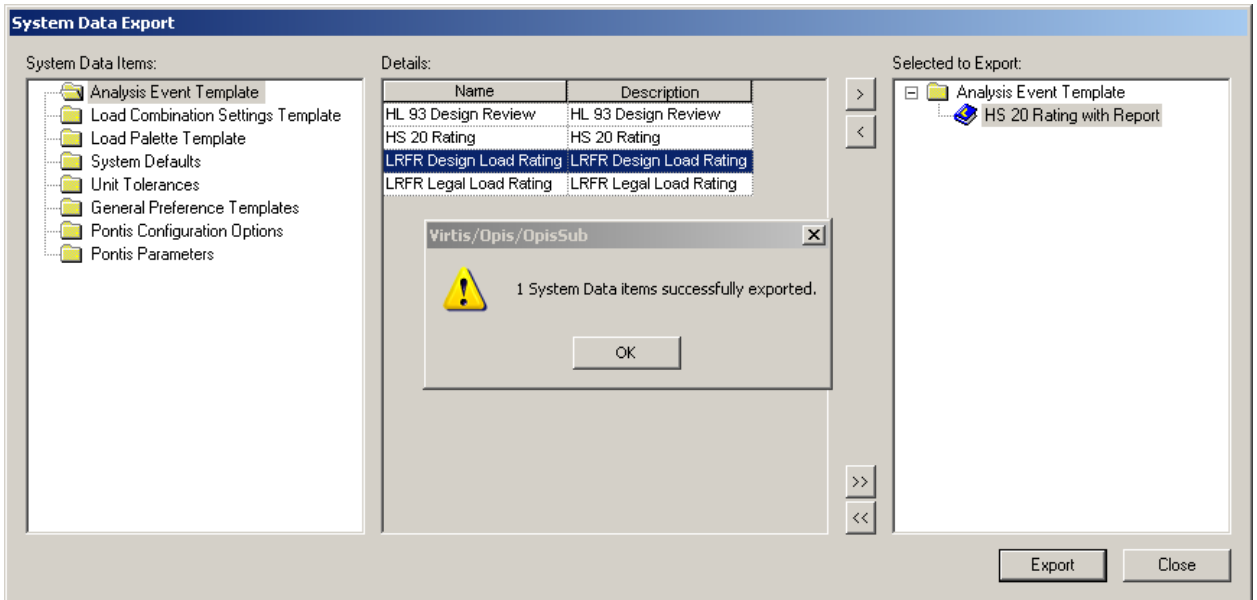


Click export button, the following window will open for user to save the selected analysis event template to a file.



Enter a name in File name and click save button to save the HS20 rating with Report template as System Data Export xml file on local drive.

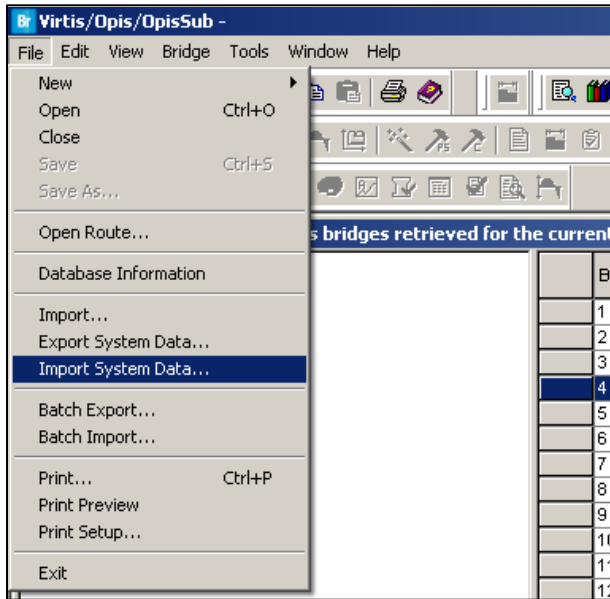
When export process is complete a message will popup.



Click OK and close the system data export dialog.

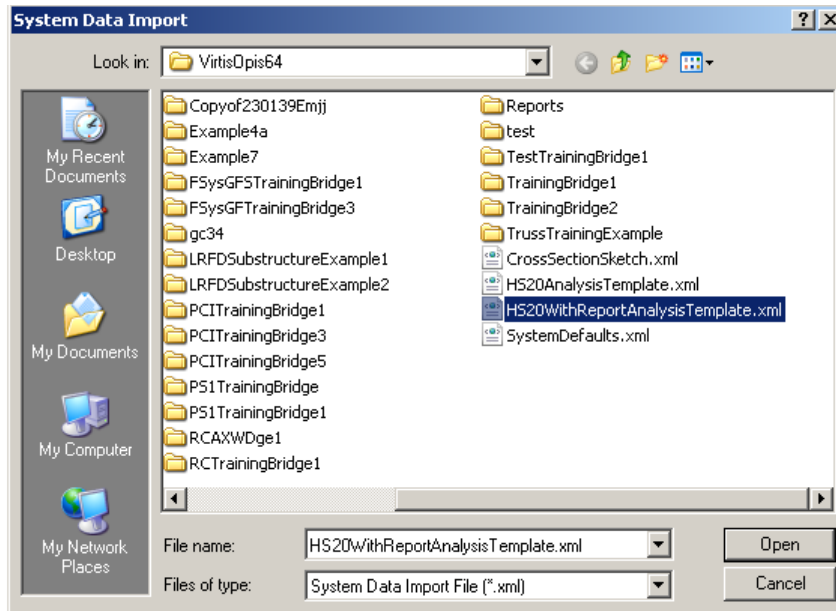
Close BrR/BrD, restart BrR/BrD and log in with a different database that you are going to import HS20 Rating with Report template.

Click File/Import System Data... on tool bar as shown below.

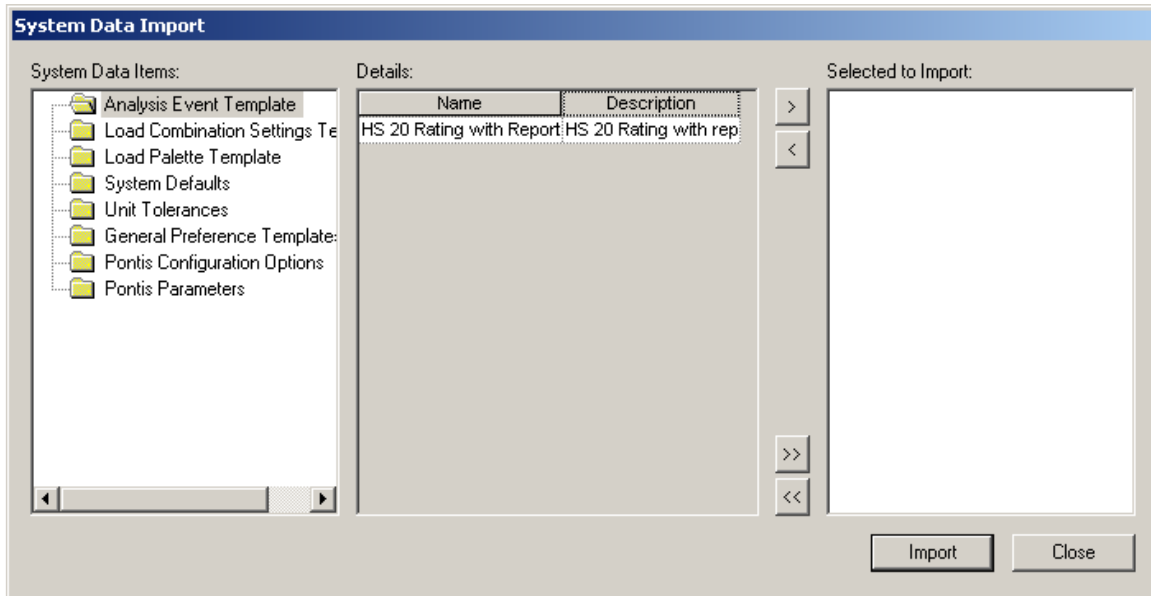



The following window will open to allow user to select an analysis event template xml file on local drive to import.

In this example, we select the HS20 rating with report template that exported from the sample database in last step.

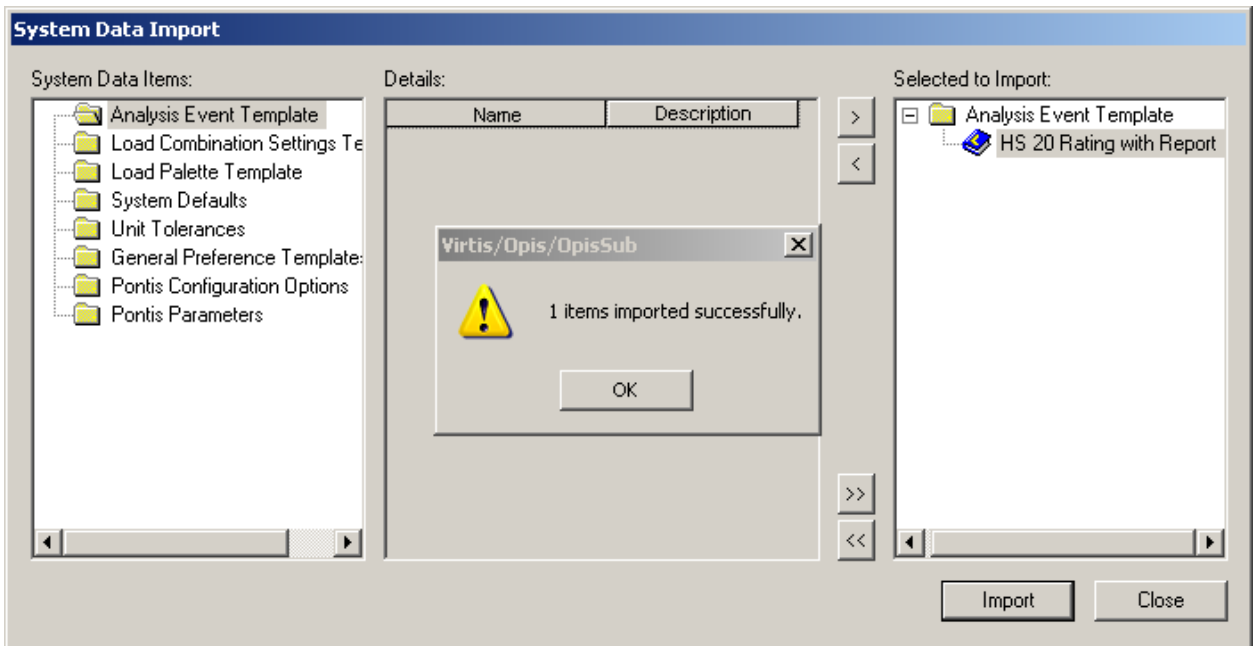


System data import dialog will open as shown below.




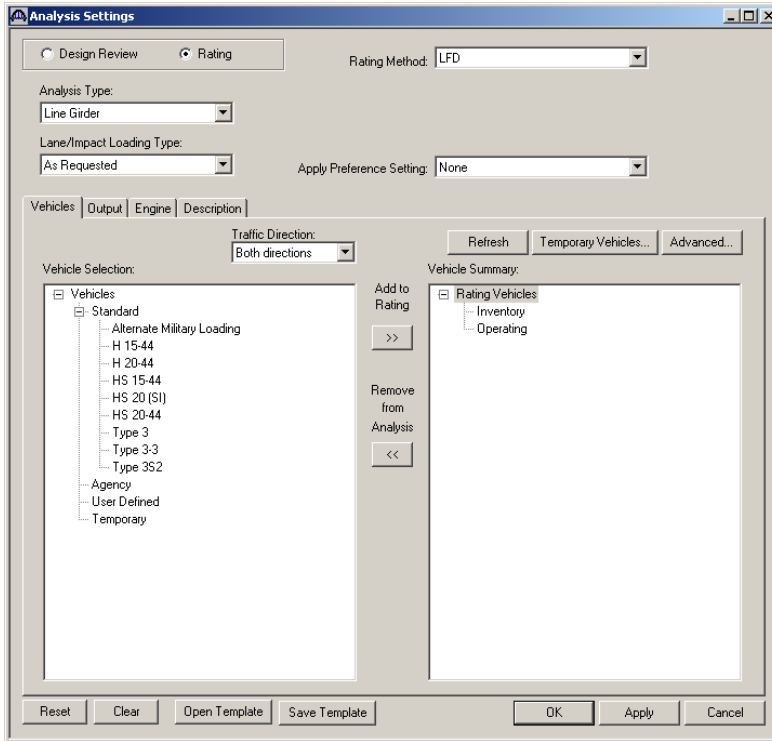
Select HS 20 rating with report and click  button to add this analysis event template to import and click import button to start import.

When import process is complete a message will popup.

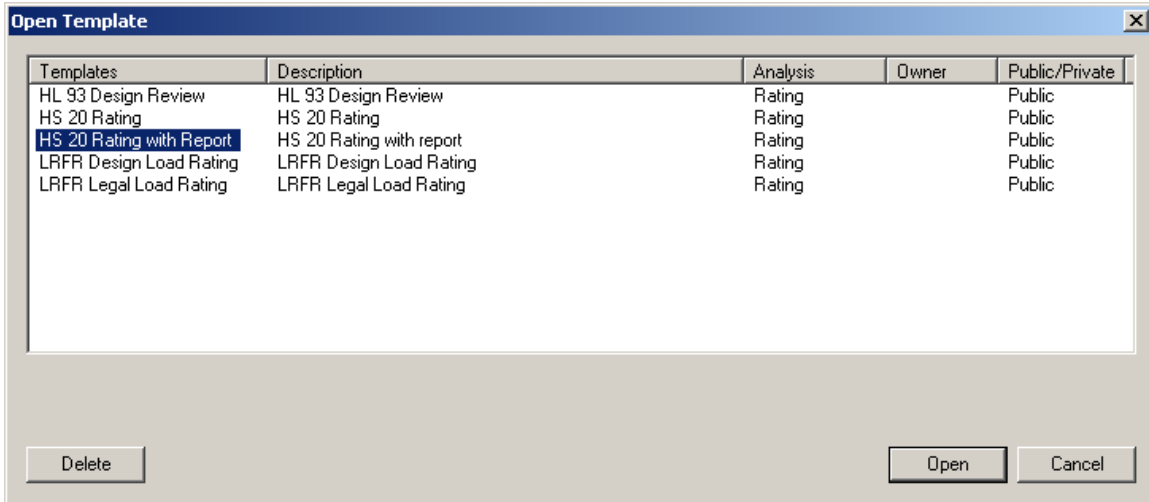


Click OK and close the system data import dialog.

To use this analysis event template, open a bridge in this database, click View Analysis Settings button  on the tool bar.

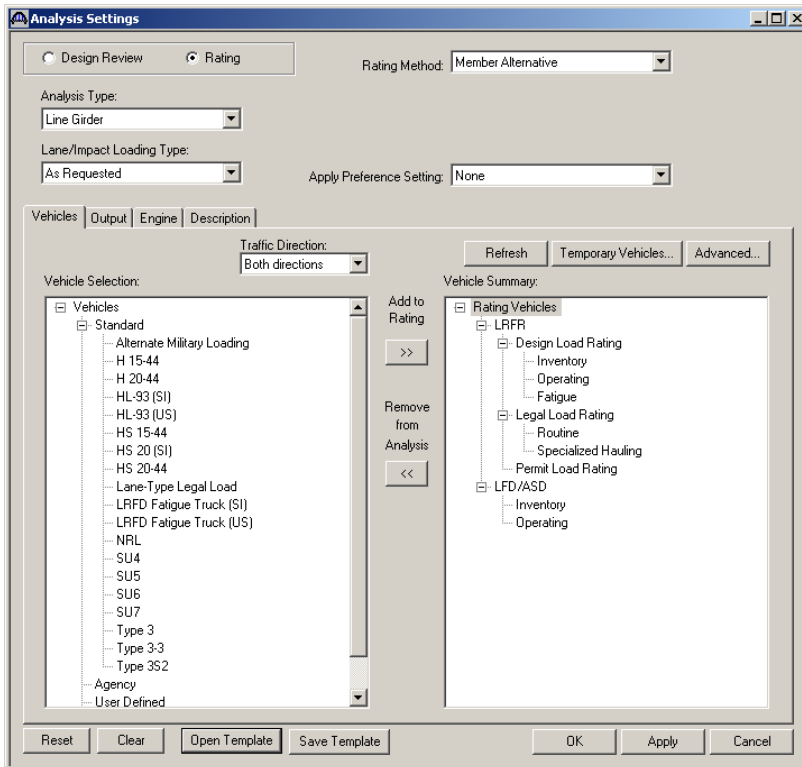


Click Open Template button at the bottom of Analysis Settings window.

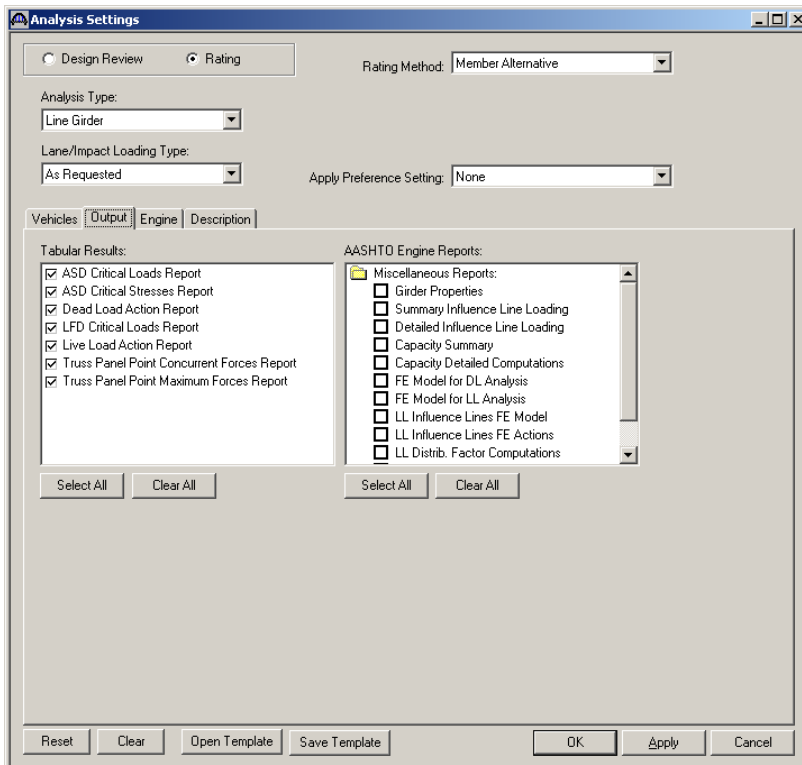


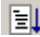
Select HS 20 Rating with Report and click Open button.

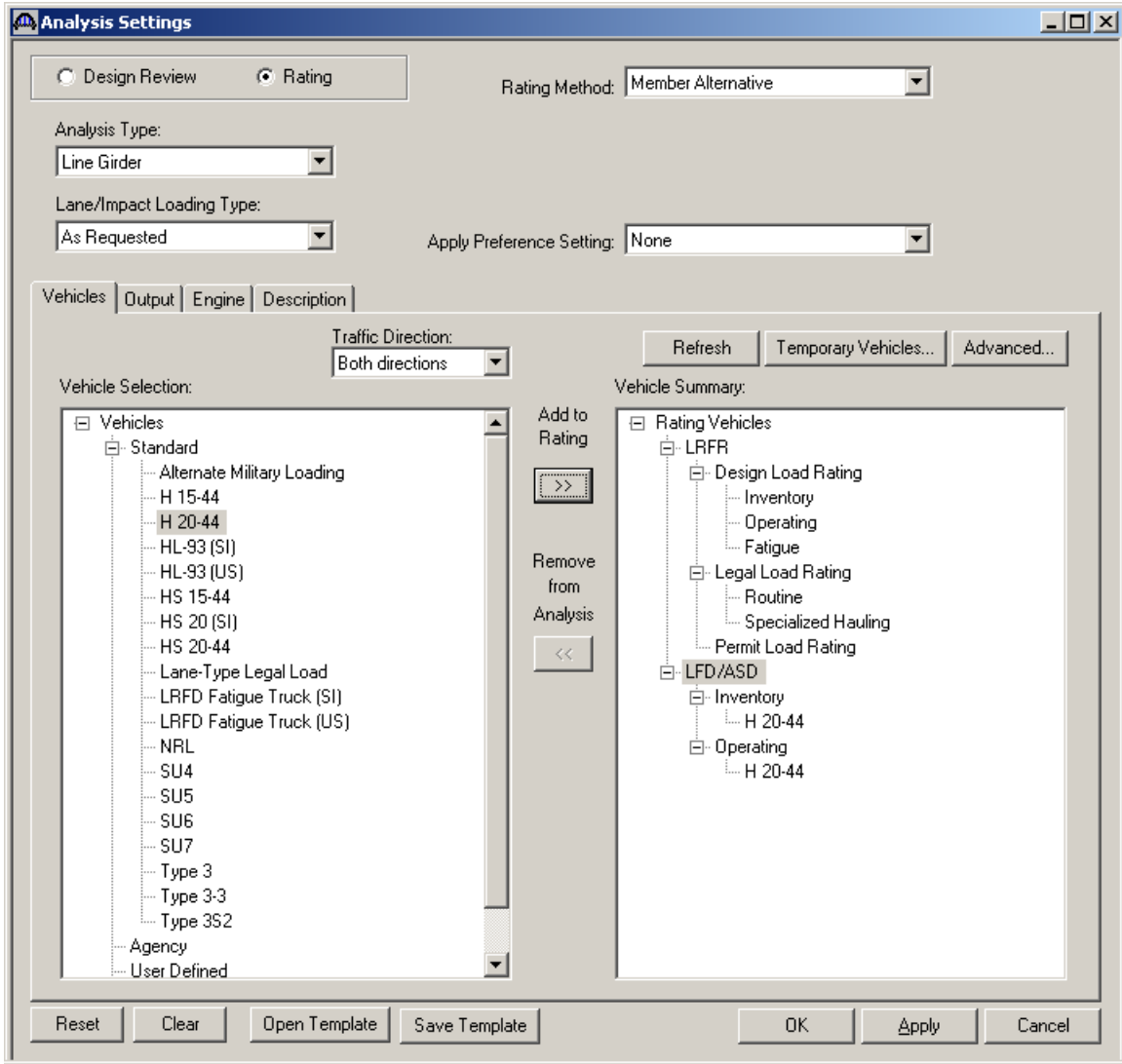
The analysis settings window will look like the following. Currently Vehicles cannot be exported with the template. User will need to add desired vehicles manually.



The output settings are exported and imported to the analysis event template.

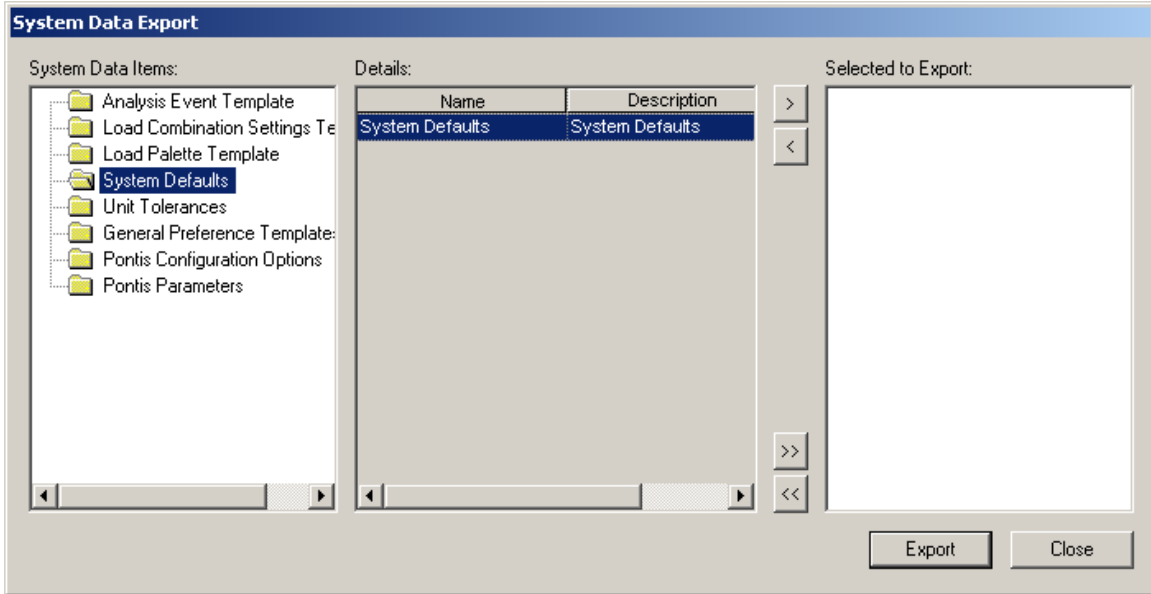



Add HS20 vehicle to LFD/ASD and click OK to save to memory. Click Analyze button  on the tool bar to do analysis.

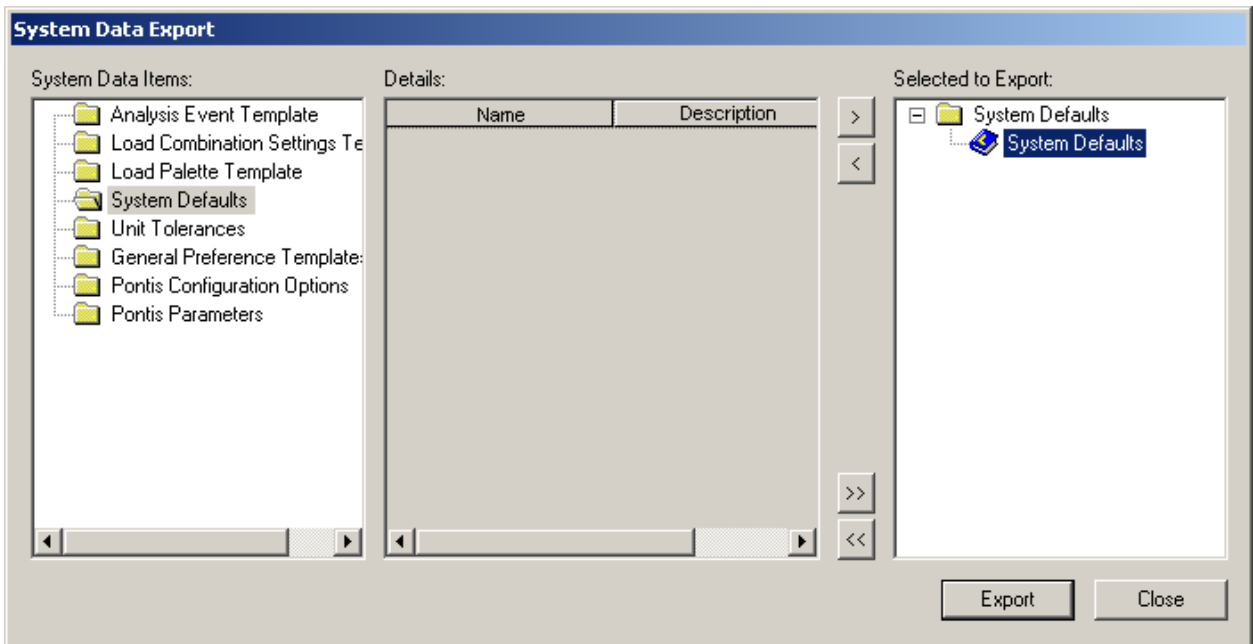


Import and export System Defaults

Open sample database (Virtis64s) that came with installation, click File/Export System Data... on tool bar. System data export dialog will open, select System Defaults in the System Data Item tree as shown below.

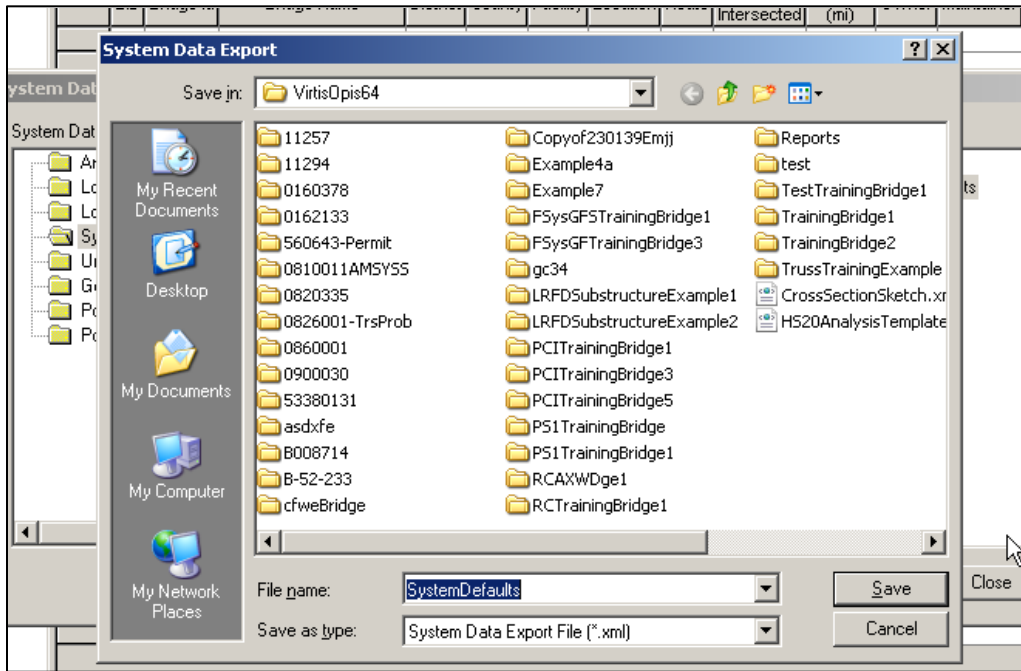


Click  button to add this System Defaults to export.



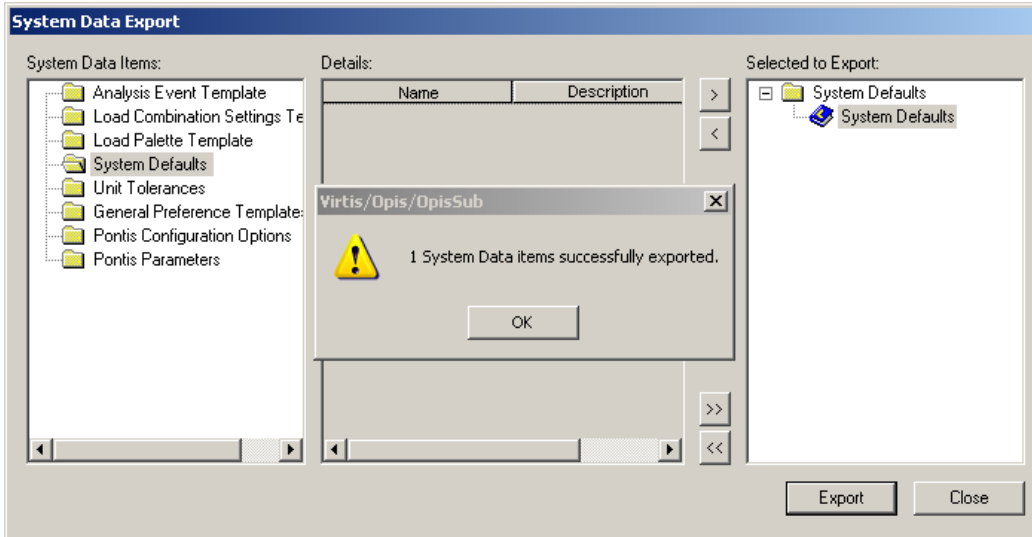
Select System Defaults and click export button.

The following window will open for user to save the selected System Defaults.



Enter a name in File name and click save button to save the System Defaults as System Data Export xml file on local drive.

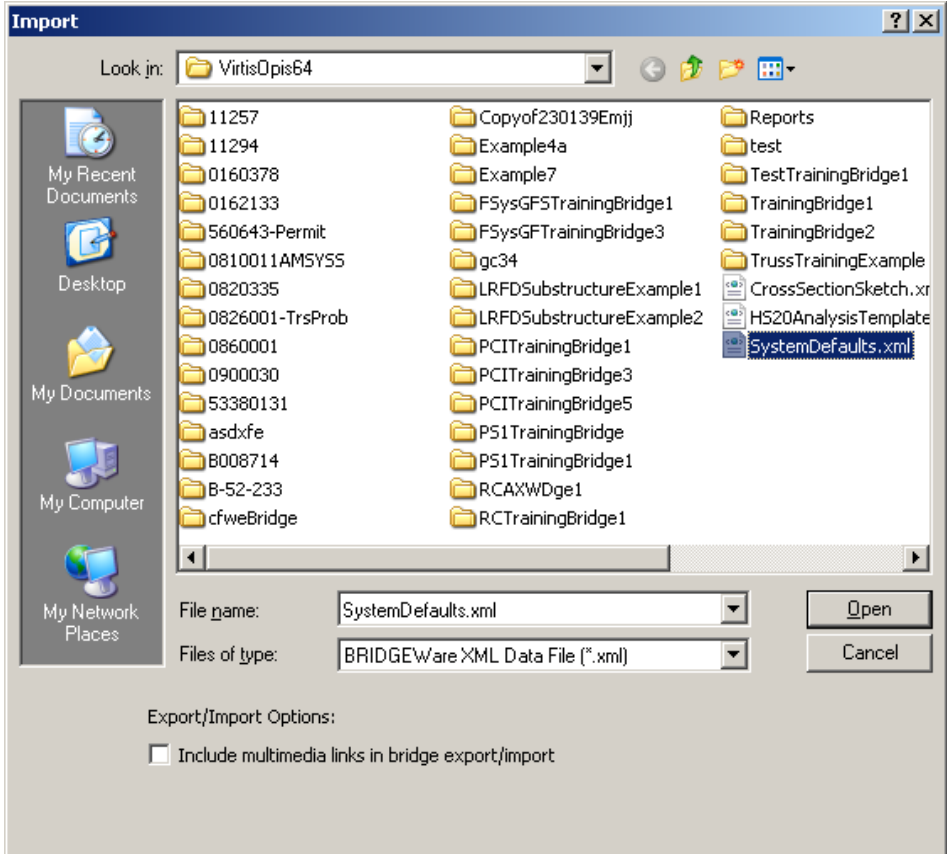
When export process is complete a message will popup.



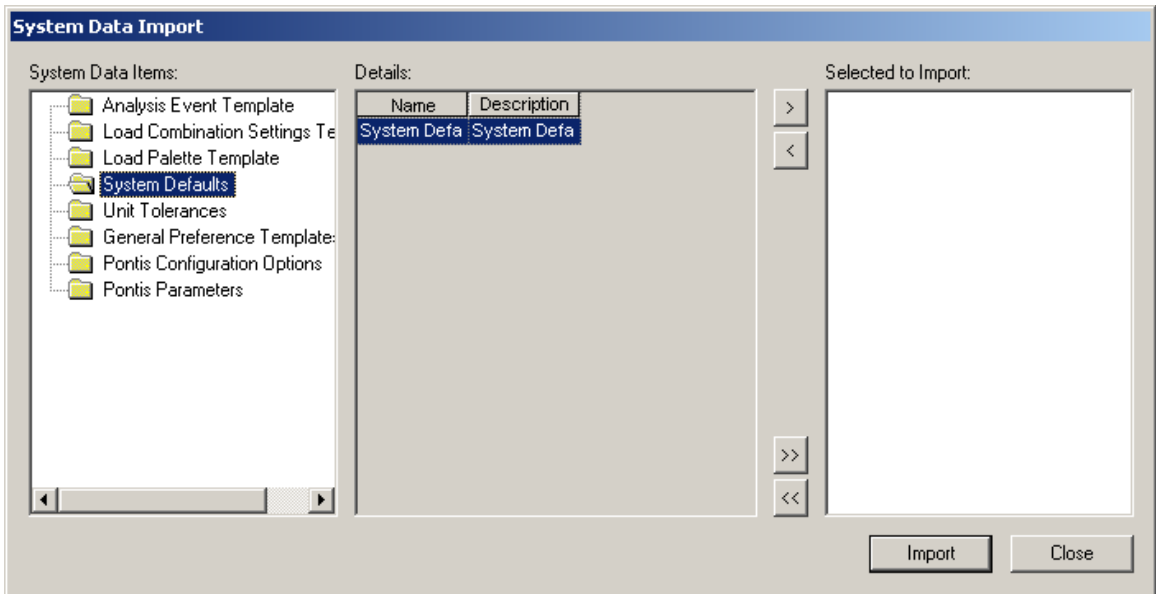
Click OK and close the system data export dialog.


Close BrR/BrD, restart BrR/BrD and log in the production database that you are going to import System Defaults. Click File/Import System Data... on tool bar.

The following window will open to allow user to select a System Defaults xml file on local drive to import. In this example, we select the System Defaults that exported from the sample database in last step.

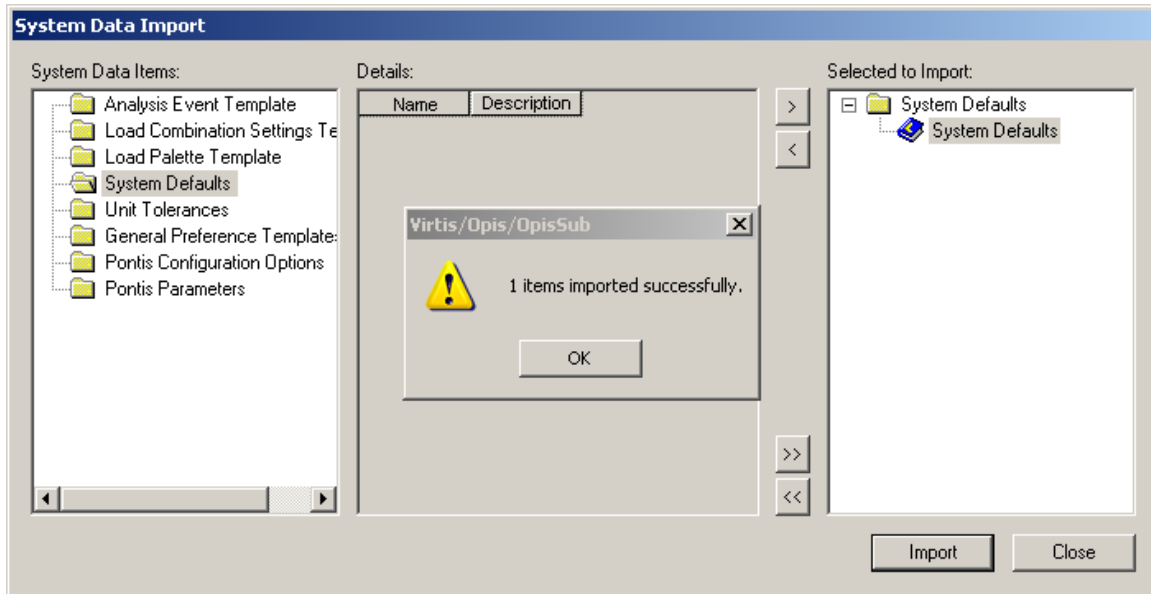


System data import dialog will open as shown below.




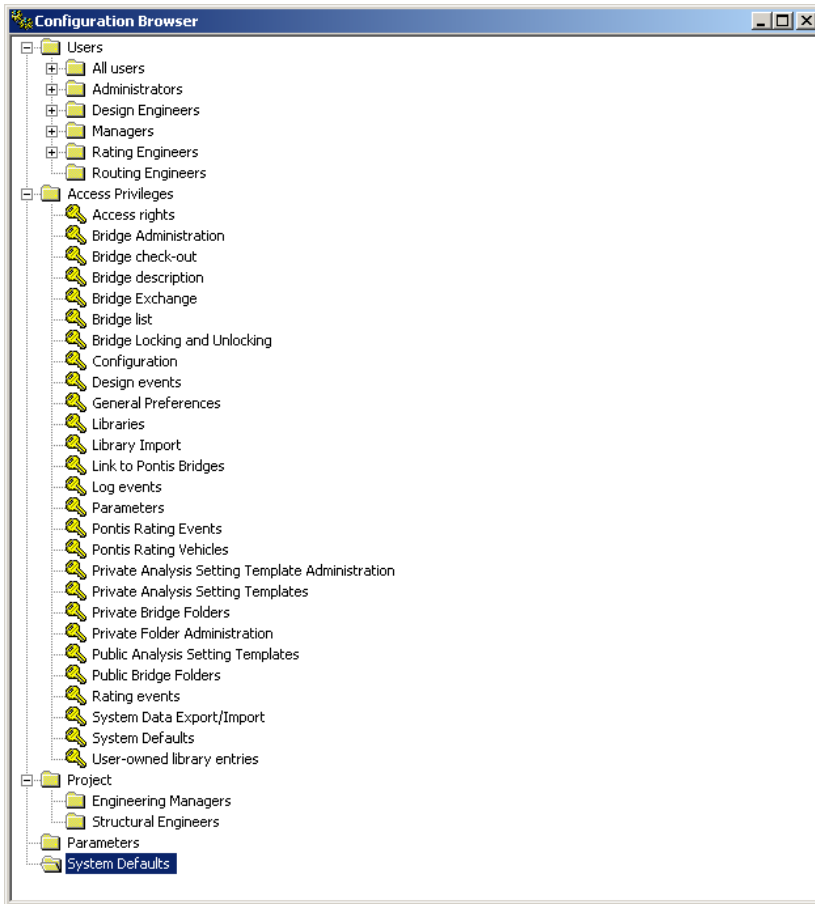
Select System Defaults and click  button to add this system defaults to import and click import button to start import.

When import process is complete a message will popup.



Click OK and close the system data import dialog.

To view the imported System Defaults, click Configuration Browser button  on the tool bar. Configuration Browser will open as shown below.



Select System Defaults at the bottom and double click to open System Defaults window to view imported data.

